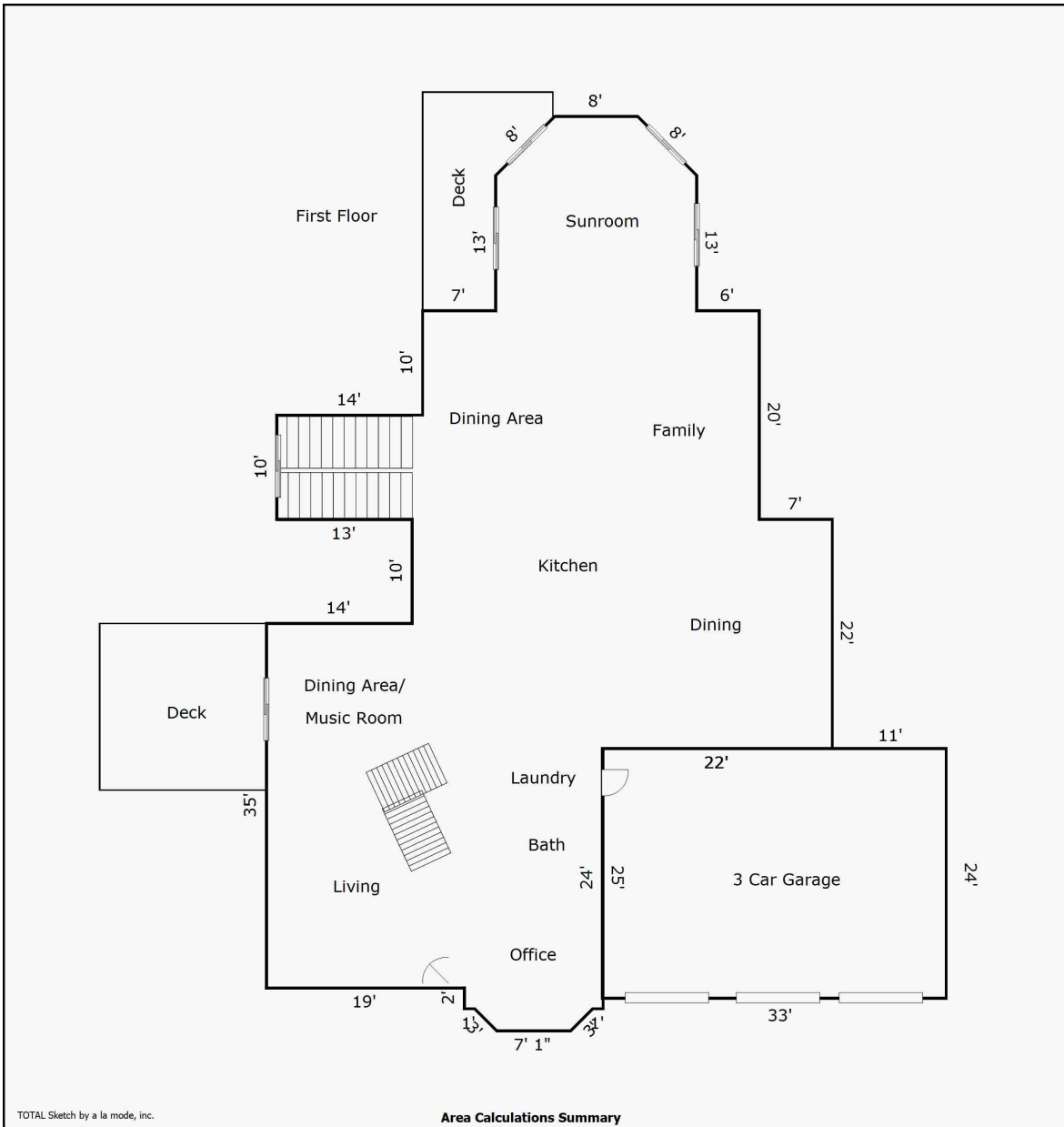


## Building Sketch (Page - 1)

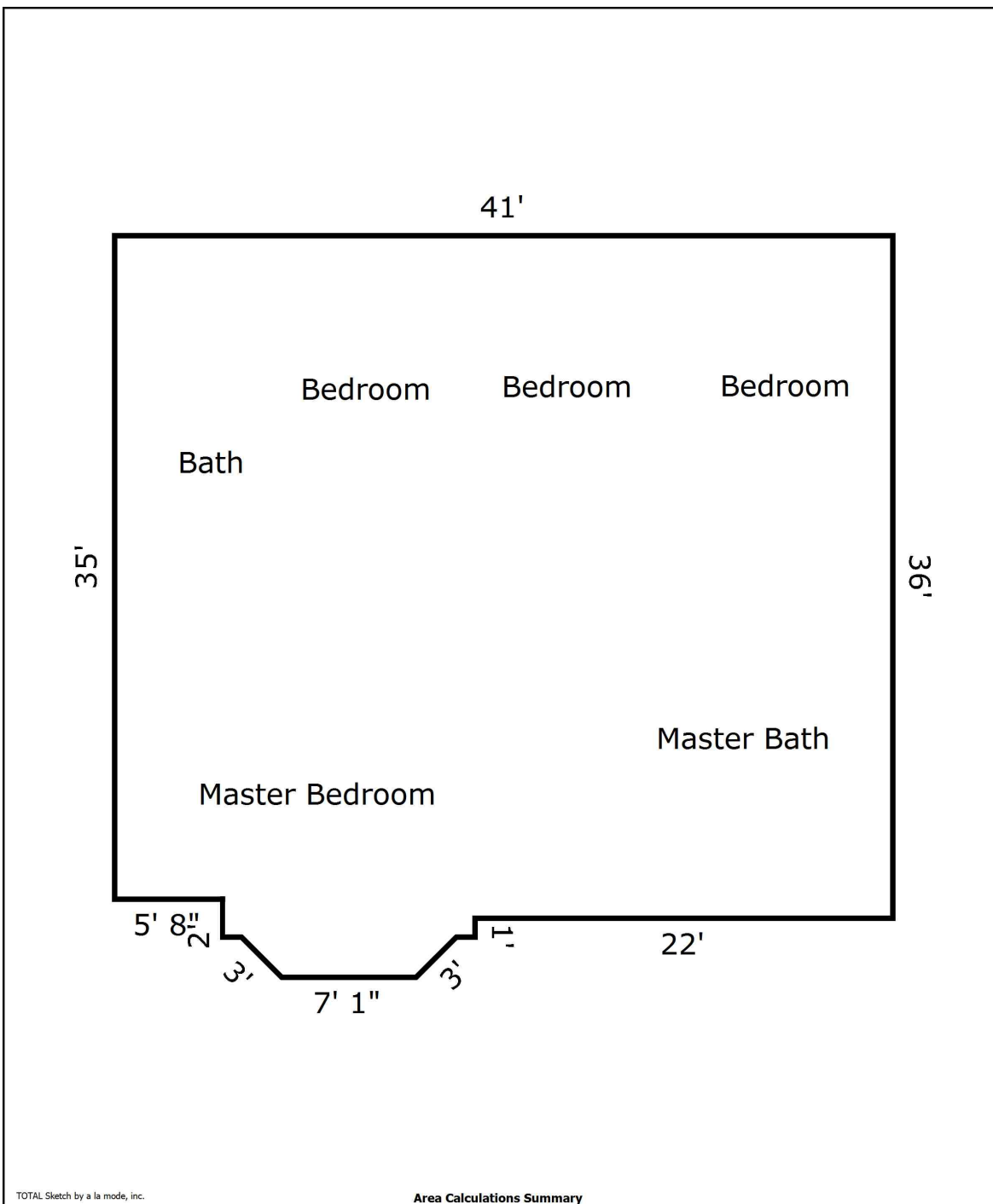
Borrower	N/A				
Property Address	90 Lynnwood Ln				
City	Worcester	County	Worcester	State	MA
Zip Code	01609				
Lender/Client	N/A				



Living Area	Calculation Details	
First Floor	2958.85 Sq ft	
		$0.5 \times 5.66 \times 5.66 = 16$
		$0.5 \times 5.66 \times 5.66 = 16$
		$8 \times 5.66 = 45.28$
		$19.31 \times 13 = 251.03$
		$32.31 \times 10 = 323.10$
		$46.31 \times 10 = 463.10$
		$40.31 \times 10 = 403.10$
		$54.31 \times 12 = 651.72$
		$32.31 \times 23 = 743.13$
		$13.31 \times 2 = 26.62$
		$0.5 \times 2.12 \times 2.12 = 2.25$
		$0.5 \times 2.12 \times 2.12 = 2.25$
		$7.07 \times 2.12 = 15$
<b>Total Living Area (Rounded):</b>	<b>2959 Sq ft</b>	
<b>Non-living Area</b>		
3 Car Attached	792 Sq ft	$24 \times 33 = 792$

### Building Sketch (Page - 2)

Borrower	N/A				
Property Address	90 Lynnwood Ln				
City	Worcester	County	Worcester	State	MA
Zip Code	01609				
Lender/Client	N/A				

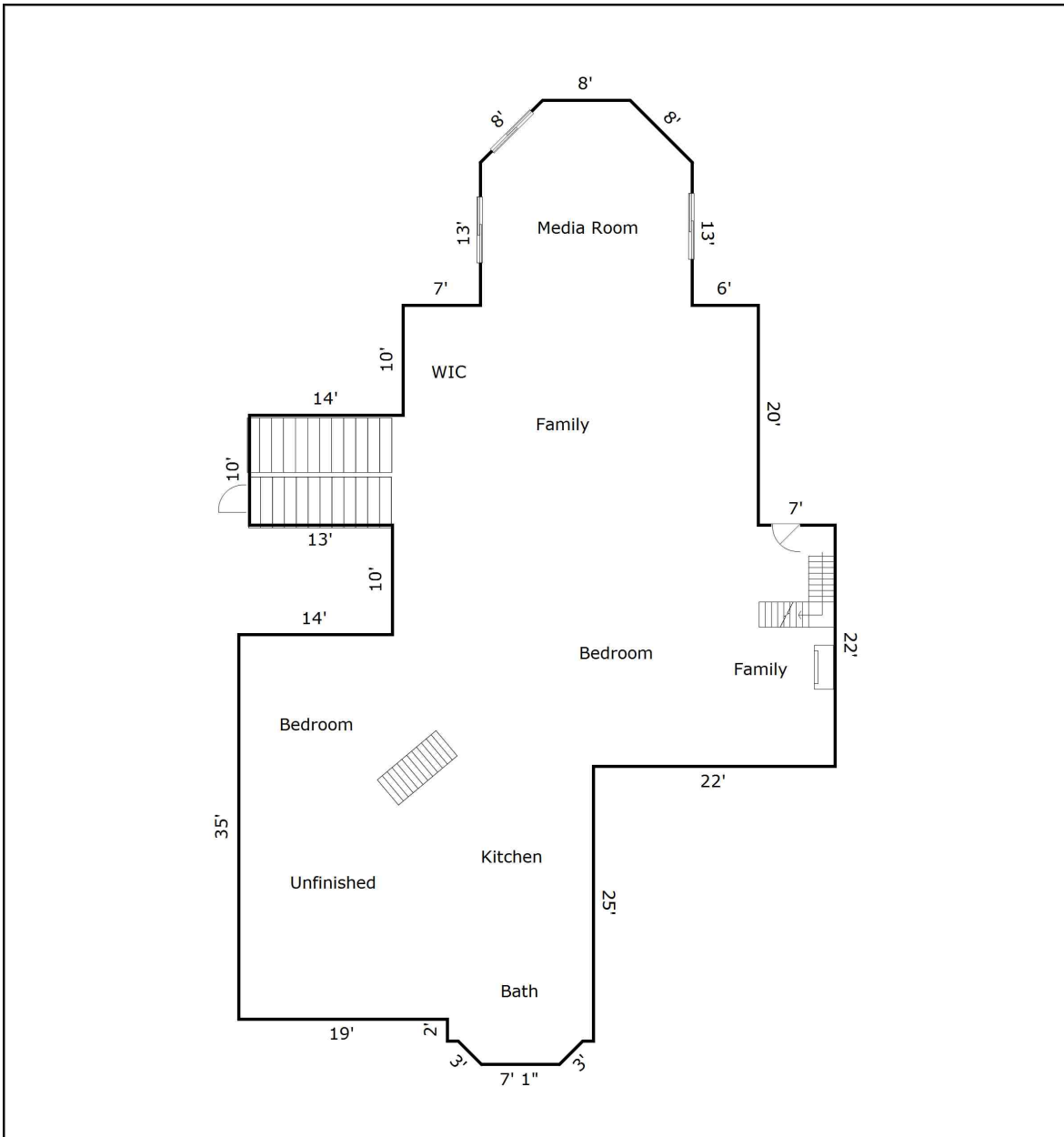


TOTAL Sketch by a la mode, inc.

Area Calculations Summary		Calculation Details	
<b>Living Area</b>			
Second Floor	1503.13 Sq ft	41 × 35	= 1435
		35.31 × 1	= 35.31
		13.31 × 1	= 13.31
		0.5 × 2.12 × 2.12	= 2.25
		0.5 × 2.12 × 2.12	= 2.25
		7.07 × 2.12	= 15
<b>Total Living Area (Rounded):</b>	<b>1503 Sq ft</b>		

### Building Sketch (Page - 3)

Borrower	N/A				
Property Address	90 Lynnwood Ln				
City	Worcester	County	Worcester	State	MA
Lender/Client	N/A		Zip Code	01609	



TOTAL Sketch by a la mode, inc. **Area Calculations Summary**

Non-living Area		
Basement	2958.85 Sq ft	
		$0.5 \times 5.66 \times 5.66 = 16$
		$0.5 \times 5.66 \times 5.66 = 16$
		$8 \times 5.66 = 45.25$
		$19.31 \times 13 = 251.08$
		$32.31 \times 10 = 323.14$
		$46.31 \times 10 = 463.14$
		$40.31 \times 10 = 403.14$
		$54.31 \times 12 = 651.76$
		$32.31 \times 23 = 743.22$
		$13.31 \times 2 = 26.63$
		$0.5 \times 2.12 \times 2.12 = 2.25$
		$0.5 \times 2.12 \times 2.12 = 2.25$
		$7.07 \times 2.12 = 15$